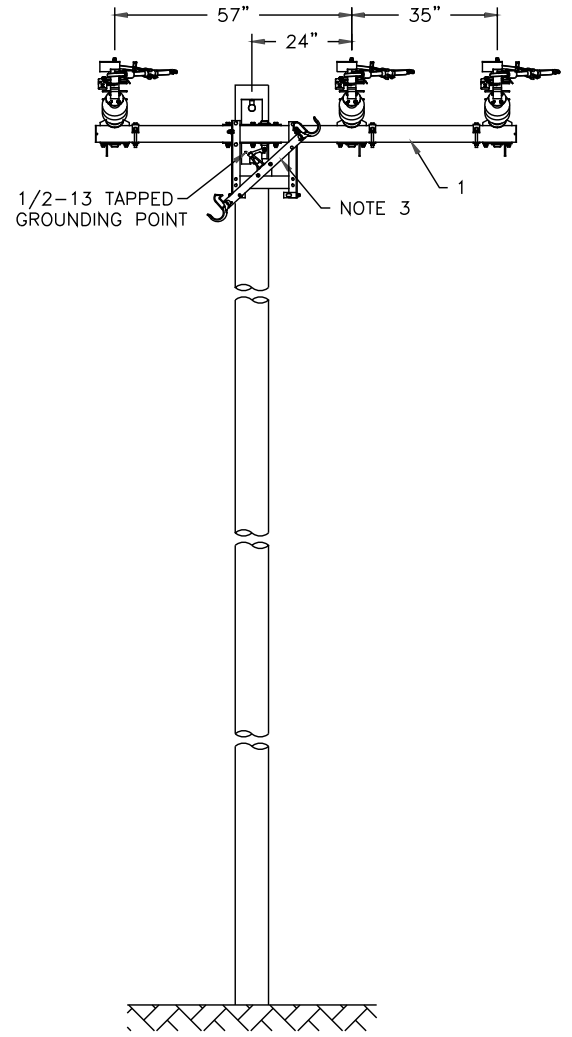


NOTE 2



1/2-13 TAPPED GROUNDING POINT

NOTE 3

SUGGESTED POLE DRILLING

NOTES:

1. ARRESTORS MUST BE POSITIONED FOR PROPER CLEARANCE. BRACKETS MAY BE MOVED IF NECESSARY.
2. (3) 16" EXTENSION LINKS (SUPPLIED BY CUSTOMER) ARE REQUIRED ON JAW SIDE WHEN DEAD ENDING FROM SWITCH BASE.
3. WHEN THE OPERATING MECH. IS IN THE 45° POSITION AS SHOWN THE SWITCH IS CLOSED.

RATING DATA	
CAT. NO.	963XF-AHS
INTERRUPTING, AMPS	900
MAXIMUM kV	25
kV BIL	150
CONTINUOUS, AMPS	900
MOMENTARY, AMPS	40,000
SWITCH WEIGHT	290 lbs

1	VEC4100HOG	7	INSTALLATION/CHECKOUT INSTRUCTIONS
1	B-963XFH-A-250	6	SWITCH UNIT DRAWING
1	B-963XF-AHS	5	VECTOR ASSEMBLY DRAWING
LITERATURE			

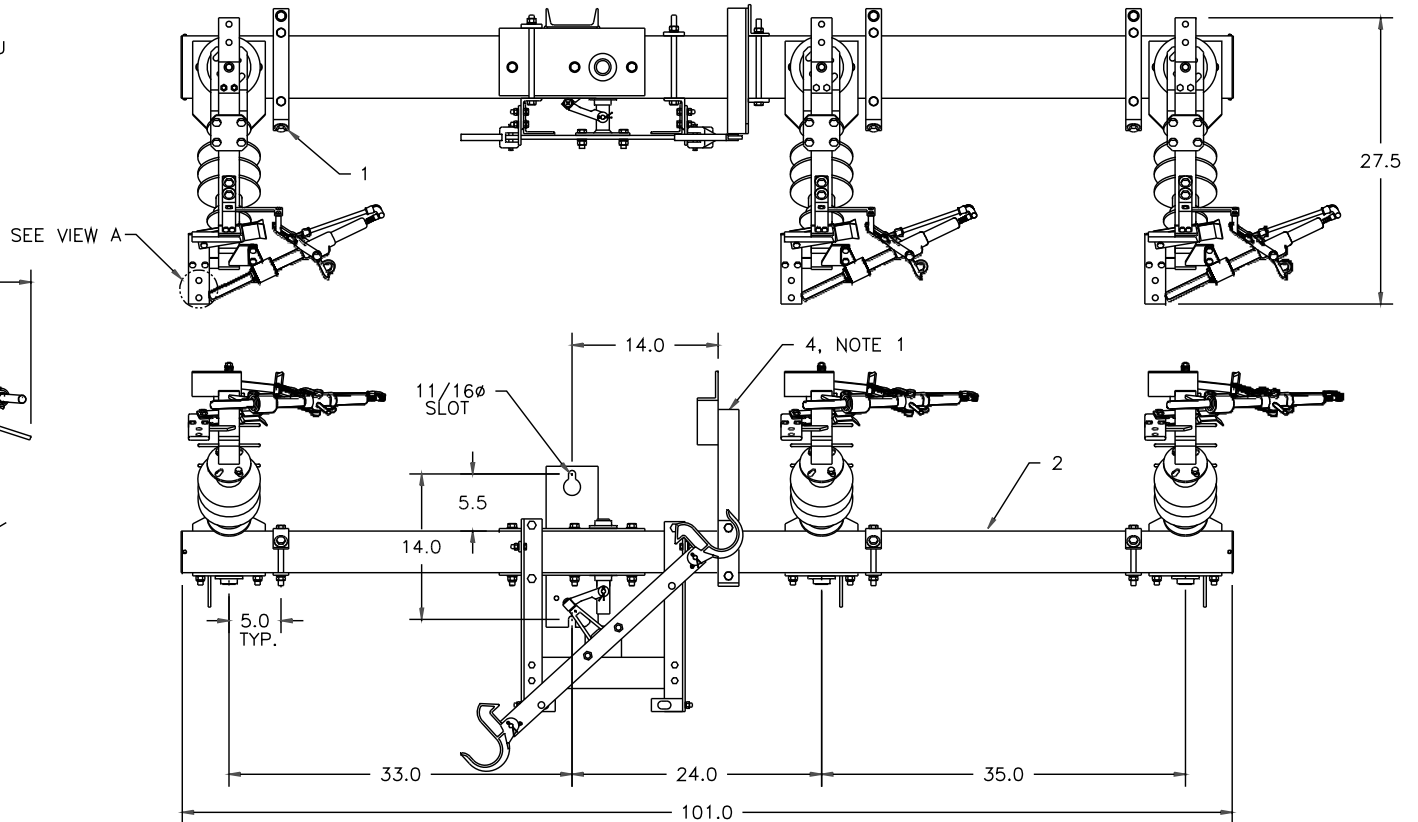
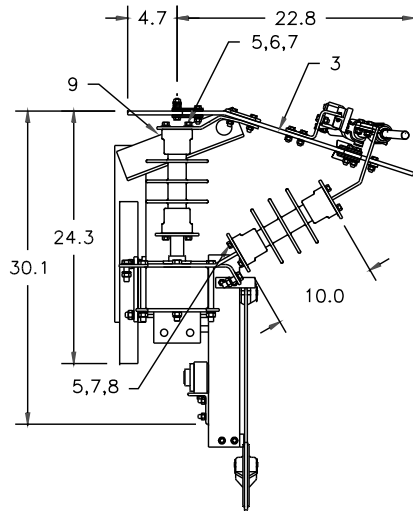
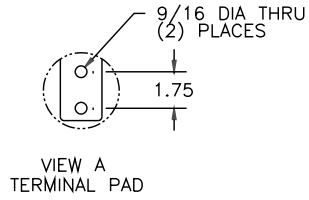
1	2822-05	4	CRATING HARDWARE
1	6444-01	3	CRATE
PACKING			

1	2820-01	2	NAMEPLATE GROUP
1	963XFH-A-250	1	SWITCH UNIT

QUANTITY	PART NO.	ITEM	MATERIAL	DESCRIPTION	
				TITLE	
	SIEMENS			VECTOR ASSEMBLY	
				DO NOT SCALE	
DRN.	DATE	APP.	DATE	B-	963XF-AHS
PF	4/20/05	WH	4/20/05		

B	NO.	DATE	DESCRIPTION	DD	BY	APP.
B	10/10/08		REVISED TITLE BLOCK	DD		

PROPRIETARY: THE INFORMATION CONTAINED IN THIS DRAWING IS THE PROPERTY OF SIEMENS ENERGY, INC. ANY REPRODUCTION WITHOUT THE WRITTEN CONSENT OF SIEMENS ENERGY, INC. IS PROHIBITED. EXCEPT THAT THE CUSTOMER MAY MAKE COPIES FOR USE SOLELY IN THE INSTALLATION, MAINTENANCE, AND OPERATION OF PRODUCTS SUPPLIED BY SIEMENS ENERGY, INC. 99 BOLTON SULLIVAN DR. WEBSTER SPRINGS AR 72543 USA PH 501-362-8296



NOTES:

- DO NOT OVER TIGHTEN BOLTS (PN8386) WHEN BOLTING HOIST ASSEMBLY (PN2819F-04) TO THE SWITCH UNIT. OVER TIGHTENING COULD CRACK THE FIBERGLASS BASE.
- SWITCH UNIT WEIGHT IS 290 POUNDS.

6	8564	8		INSULATOR 150kV/BIL SILICONE
24	8315	7	S.S.	H.H.F.M.B. 3/8-16 x 1
24	8310	6	S.S.	S.L.W. 3/8
6	8038	5	G.S.	FLAT WASHER 3/8
1	2819F-04	4		HOIST ASSEMBLY
3	2815-01	3		HOT PARTS
1	2811F-03	2		BASE ASSEMBLY
3	2388F	1		ARRESTOR BRACKET ASSEMBLY
QTY	PART NO.	ITEM	MATERIAL	DESCRIPTION

963XFH-A-250	SIEMENS		TITLE	VECTOR SWITCH UNIT
	DRN. PF	TOLERANCES UNLESS SPECIFIED		MATERIAL
	DATE 4/20/05	.X .06 FRAC. ±1/16	FINISH	
	APP. WH	.XX .03 ANGLE ±2°		
DATE 4/20/05	.XXX .005	CASTING DRAFT 3°		
ASS'Y	SCALE: 1/12	SURFACE FINISH 125/		B- 963XFH-A-250

B	10/10/08	REVISED TITLE BLOCK	DD	
NO.	DATE	DESCRIPTION	BY	APP.

PROPRIETARY: THE INFORMATION CONTAINED IN THIS DRAWING IS THE PROPERTY OF SIEMENS ENERGY, INC. ANY REPRODUCTION WITHOUT THE WRITTEN CONSENT OF SIEMENS ENERGY, INC. IS PROHIBITED. EXCEPT THAT THE CUSTOMER MAY MAKE COPIES FOR USE SOLELY IN THE INSTALLATION, MAINTENANCE, AND OPERATION OF PRODUCTS SUPPLIED BY SIEMENS ENERGY, INC. 99 BOLTON SULLIVAN DR. HEBER SPRINGS AR 72543 USA PH 501-362-8296